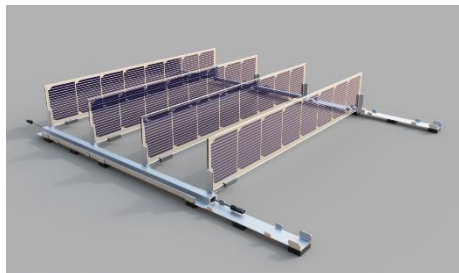


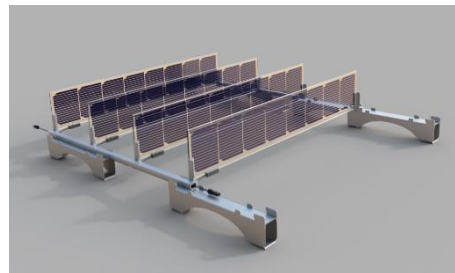
xM-2 QUATTRO-200S

FLAT ROOF SOLUTION (LM)



Designed for flat roofs esp. green roofs, the Over Easy solar solution realizes energy production in a revolutionary way. The light-weighted PV-units can be easily installed on the roof and still enable full access for inspection, maintenance and repairs. The LM (low mounted) modell is suitable for various material types of flat roofs. If your roof is covered with plants, Over Easy offers the HM (high mounted) modell optimised for green roofs, such as sedum. The modell enables plant thriving with solar installed and ensures biodiversity and water retention.

GREEN ROOF SOLUTION (HM)



VERTICAL SOLAR SYSTEM FOR FLAT ROOFS (PATENT PENDING)

- Captures more sun and generates energy more hours a day
- Peak production when energy cost is high
- High performance in areas exposed to snow loads, dusty conditions and low sun
- More energy during autumn, winter and spring

UNIQUE FEATURES

- Easy to handle pre-assembled unit that integrates PV-modules, electrical cabling and mounting structure
- Plug and play with integrated cable management
- Easy planning and logistics with 33 units on a pallet
- Low weight, adding less than 11 kg/m²
- No damaging pressure points or intrusive fasteners that might damage the integrity of the roof over time

OVER EASY SOLAR PARTNER SUPPORT

- System layout, yield estimation, string planning and inverter sizing
- Project based deliveries and logistic support
- Comprehensive installation manual and installation support
- Repair and after sales support

MECHANICAL DATA		ELECTRICAL DATA		OPERATING CONDITION	
Dimensions	HM-2: 1580x1496x340 mm LM-2: 1580x1496x280 mm	Max. Power @ STC (P_{max})	200 W	Cell Technology	Silicon Heterojunction Solar Cells
Roof area covered per unit	2.4 m ²	Bifaciality	95,7%	Operation Temperature	-40 °C ... + 85 °C
Weight	HM-2: 26 kg LM-2: 25 kg	Power Tolerance	± 3 %	Fire Safety Class	C
Tempered Glass	2x3.2 mm solar glass with anti-reflection surface	Max. Power Voltage (V_{mpp})	21.00 V	Junction Box	IP-68, 4x1 bypass diode
Vertical clearance below modules	HM-2: 120 mm LM-2: 60 mm	Max. Power Current (I_{mpp})	9.52 A	Connectors	IP-68, DC Connectors
		Open-circuit Voltage (V_{oc})	24.20 V ± 3 %	CERTIFICATES	
		Short circuit Current (I_{sc})	10.30 A ± 3 %	IEC 61215 / EN 61215	
		Max. System Voltage (V_{sys})	1000 V DC	IEC 61730-1 / EN IEC 61730 + AC:2018	
		Reverse current rating	20 A	IEC 62790	
		Cable	4 mm ² Solar Cable, 25 cm length	P33.3-AA-01 and 02	
		Temperature coefficient of P_{max}	-0.26 %/K	CE	
		Temperature coefficient of V_{oc}	-0.27 %/K		
		Temperature coefficient of I_{sc}	+0.055 %/K		